



SP431

High Voltage Adjustable Precision Shunt Regulators

DESCRIPTION

The SP431 is high-voltage three-terminal adjustable voltage references, with specified thermal stability over applicable industrial and commercial temperature ranges. Output voltage can be set to any value between V_{REF} (2.5V) and 36V with two external resistors. These devices have a typical output impedance of 0.25Ω . Active output circuitry provides a very sharp turn-on characteristic, making the SP431 excellent replacements for low-voltage Zener diodes in many applications, including onboard regulation and adjustable power supplies.

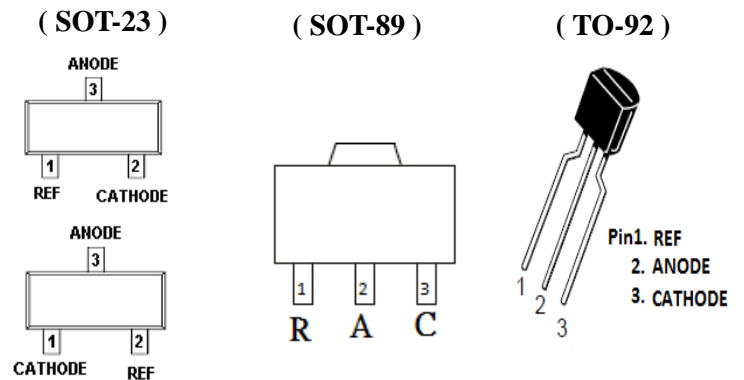
APPLICATIONS

- Battery Power Equipment
- Linear Regulators
- Switch Power Supply
- Cellular Phone
- Digital Cameras
- Computer Disk Drivers
- Instrumentation

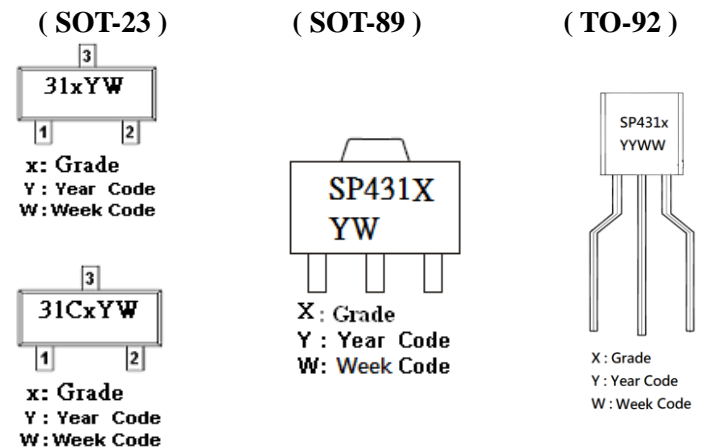
FEATURES

- ◆ Low Output Noise
- ◆ Adjustable Output Voltage, $V_O = V_{ref}$ to 36V
- ◆ Low Operational Cathode Current
- ◆ 0.25Ω Typical Output Impedance

PIN CONFIGURATION



PART MARKING





SP431

High Voltage Adjustable Precision Shunt Regulators

PIN DESCRIPTION: SP431AS23RGB/SP431BS23RGB

Pin	Symbol	Description
1	R	REF
2	C	CATHODE
3	A	ANODE

PIN DESCRIPTION: SP431AS89RGB/ SP431BS89RGB/ SP431AT92AGB/SP431BT92AGB

Pin	Symbol	Description
1	R	REF
2	A	ANODE
3	C	CATHODE

PIN DESCRIPTION: SP431CAS23RGB/SP431CBS23RGB

Pin	Symbol	Description
1	C	CATHODE
2	R	REF
3	A	ANODE

ORDERING INFORMATION

Part Number	Voltage Tolerance	Package	Part Marking
SP431AS23RGB	0.5%	SOT-23	31AYW
SP431BS23RGB	1.0%	SOT-23	31BYW
SP431AS89RGB	0.5%	SOT-89	SP431A
SP431BS89RGB	1.0%	SOT-89	SP431B
SP431CAS23RGB	0.5%	SOT-23	31CAYW
SP431CBS23RGB	1.0%	SOT-23	31CBYW
SP431AT92AGB	0.5%	TO-92	SP431A
SP431BT92AGB	1.0%	TO-92	SP431B

※ Week Code : A ~ Z (1 ~ 26) ; a ~ z (27 ~ 52)

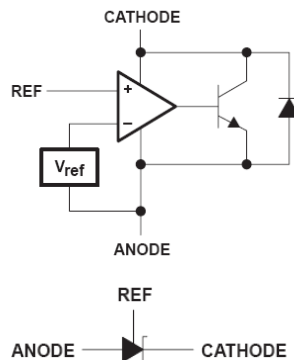
※ SP431AS23RGB/SP431BS23RGB : Tape Reel ; Pb – Free; Halogen – Free

※ SP431AS89RGB/SP431BS89RGB : Tape Reel ; Pb – Free; Halogen – Free

※ SP431CAS23RGB/SP431CBS23RGB : Tape Reel ; Pb – Free; Halogen – Free

※ SP431AT92AGB/SP431BT92AGB : Tape Ammo ; Pb – Free; Halogen – Free

BLOCK DIAGRAM





SP431

High Voltage Adjustable Precision Shunt Regulators

ABSOLUTE MAXIMUM RATINGS (TA=25°C Unless otherwise specified)

Parameter	Symbol	Value	Unit
Cathode Voltage	V _Z	37	V
Continuous Cathode Current	I _Z	150	mA
Reference Current	I _{REF}	10	mA
Operation Junction Temperature Range	T _J	-40 ~ +150	°C
Storage Temperature Range	T _{STG}	-65 ~ +150	°C
Lead Temperature for 10 seconds	T _{SOL}	260	°C
Thermal Resistance-Junction to Ambient (TO-92)	Θ _{JA}	140	°C/W
Thermal Resistance-Junction to Case (TO-92)	Θ _{JC}	60	°C/W
Thermal Resistance-Junction to Ambient (SOT-89)	Θ _{JA}	85	°C/W
Thermal Resistance-Junction to Case (SOT-89)	Θ _{JC}	45	°C/W
Thermal Resistance-Junction to Ambient (SOT-23)	Θ _{JA}	250	°C/W
Thermal Resistance-Junction to Case (SOT-23)	Θ _{JC}	120	°C/W

The IC has a protection circuit against static electricity. Do not apply high static electricity or high voltage that exceeds the performance of the protection circuit to the IC.

ELECTRICAL CHARACTERISTICS (TA=25°C , Unless otherwise specified)

Parameter	Symbol	Conditions	Min.	Typ.	Max.	Unit	
Reference Voltage	V _{REF}	V _Z = V _{REF} I _Z = 10mA	SP431AS23RGB SP431AS89RGB SP431CAS23RGB SP431AT92AGB	2.482	2.495	2.508	V
			SP431BS23RGB SP431BS89RGB SP431CBS23RGB SP431BT92AGB	2.47	2.495	2.52	
Reference Voltage	V _{REF}	V _Z = V _{REF} I _Z = 1mA	SP431AS23RGB SP431AS89RGB SP431CAS23RGB SP431AT92AGB	2.482	2.495	2.508	V
			SP431BS23RGB SP431BS89RGB SP431CBS23RGB SP431BT92AGB	2.47	2.495	2.52	
V _{REF} Temp Deviation	V _{DEV}	TA=-40°C~+85°C V _Z = V _{REF} , I _Z = 10mA		10	25	mV	
		TA=-40°C~+125°C V _Z = V _{REF} , I _Z = 10mA		20	35		
Ratio of change in V _{REF} to change in Cathode voltage	ΔV _{REF} / ΔV _Z	I _Z = 10mA ΔV _Z = 36V ~ V _{REF}		-1.4	-2.7	mV / V	
Reference Input Current	I _{REF}	R ₁ =10KΩ , R ₂ = ∞ , I _Z = 10mA		2	4	uA	
I _{REF} Temp Deviation	I _{REF(DEV)}	TA=-40°C~+85°C R ₁ =10KΩ , R ₂ = ∞ , I _Z = 10mA		0.8	2.5	uA	
Off state Cathode Current	I _{Z(OFF)}	V _{REF} = 0V V _Z = 36V		0.1	0.5	uA	



SP431

High Voltage Adjustable Precision Shunt Regulators

Dynamic output impedance	R_Z	$f < 1\text{KHZ}$, $V_Z = V_{REF}$ $I_Z = 1\text{mA} \sim 100\text{mA}$	0.25	0.5	Ω
Minimum Operation Current	$I_{Z(MIN)}$	$V_Z = V_{REF}$	0.4	0.7	mA

TESTING CIRCUIT

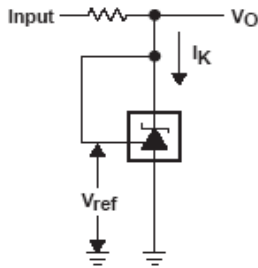


Figure 1. Test Circuit for $V_{KA} = V_{ref}$,
 $V_O = V_{KA} = V_{ref}$

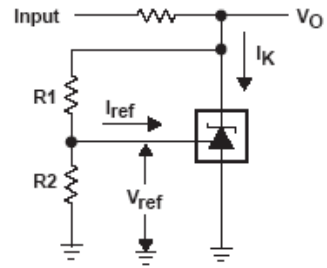


Figure 2. Test Circuit for $V_{KA} > V_{ref}$,
 $V_O = V_{KA} = V_{ref} \times (1 + R1/R2) + I_{ref} \times R1$

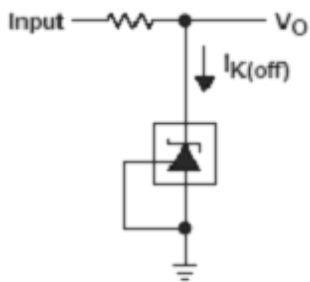


Figure 3. Test Circuit for $I_{K(off)}$

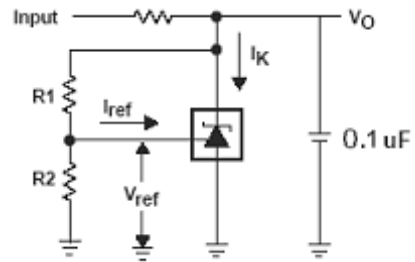


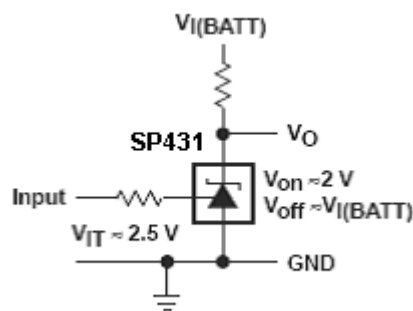
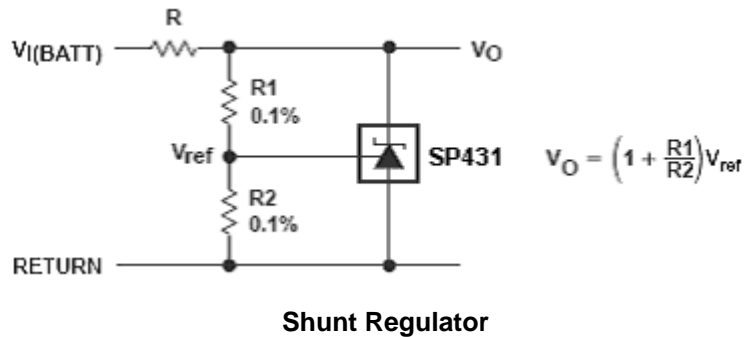
Figure 4. Test Circuit for $V_{KA} > V_{ref}$,
 $V_O = V_{KA} = V_{ref} \times (1 + R1/R2) + I_{ref} \times R1$



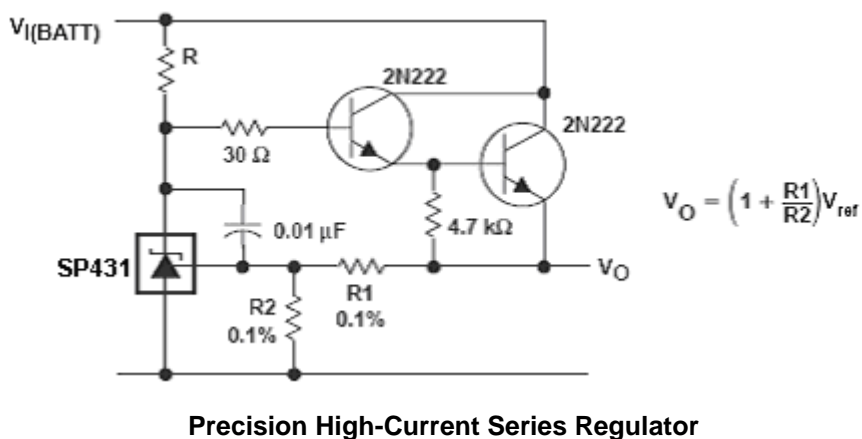
SP431

High Voltage Adjustable Precision Shunt Regulators

APPLICATION CIRCUIT



Single-Supply Comparator With Temperature-Compensated Threshold

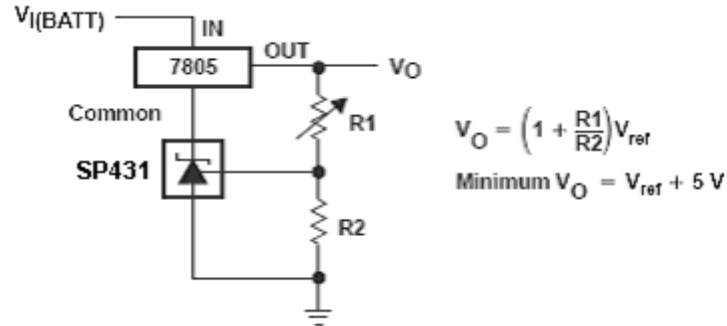




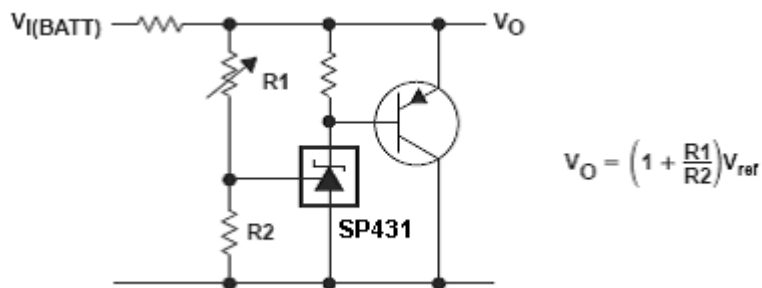
SP431

High Voltage Adjustable Precision Shunt Regulators

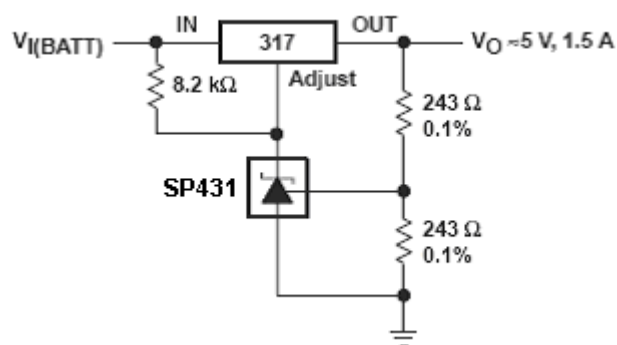
APPLICATION CIRCUIT



Output Control of a Three-Terminal Fixed Regulator



High-Current Shunt Regulator



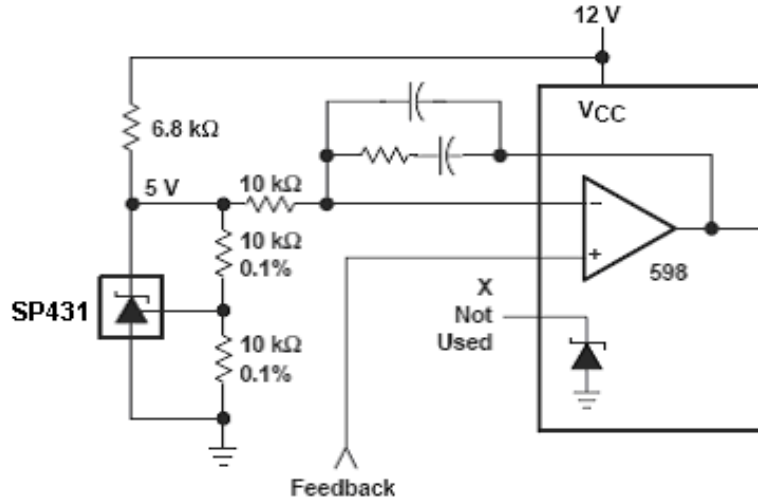
Precision 5-V 1.5-A Regulator



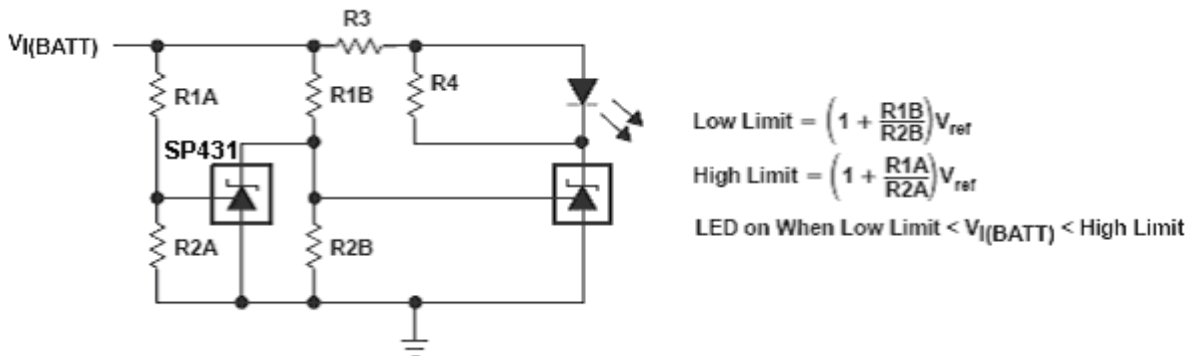
SP431

High Voltage Adjustable Precision Shunt Regulators

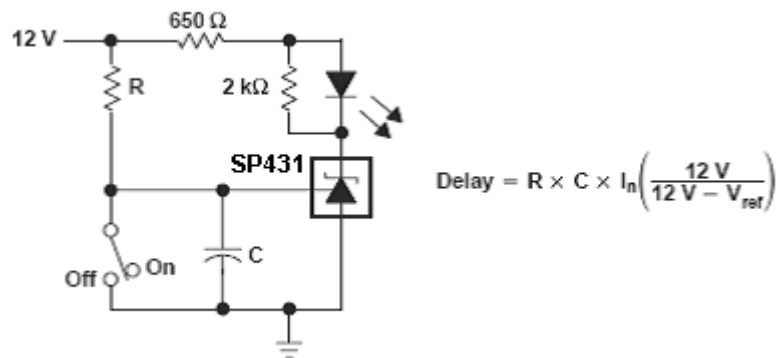
APPLICATION CIRCUIT



PWM Converter With Reference



Voltage Monitor



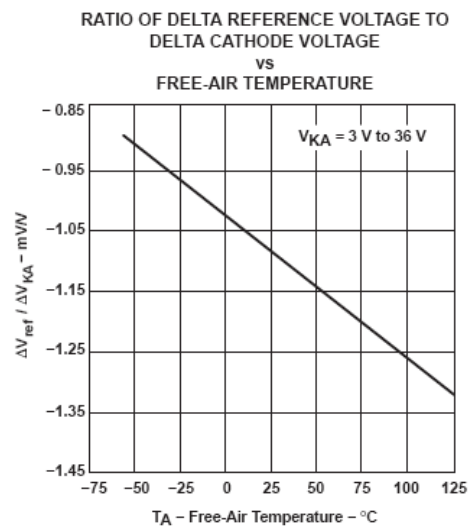
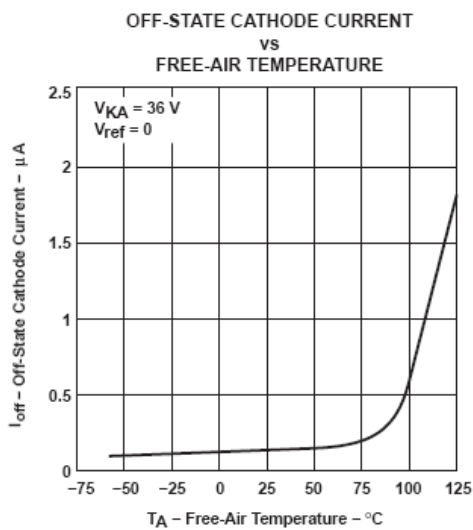
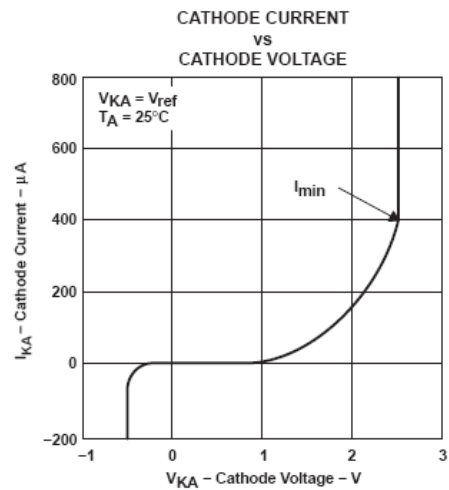
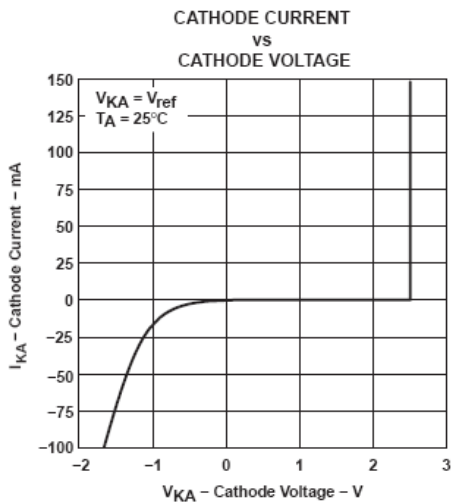
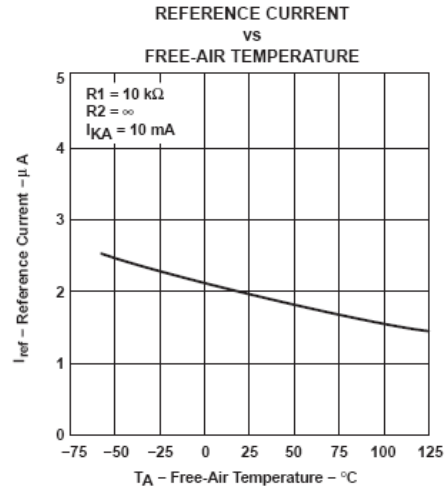
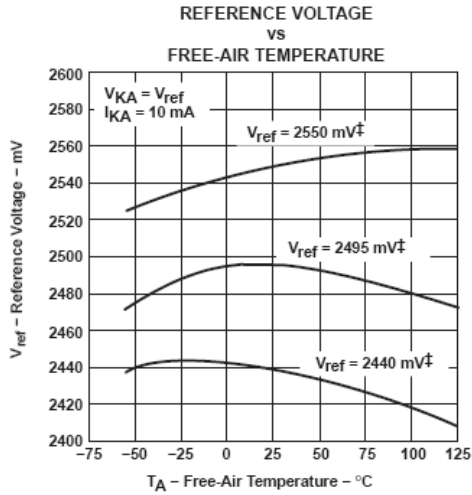
Delay Timer



SP431

High Voltage Adjustable Precision Shunt Regulators

PERFORMANCE CHARACTERISTICS

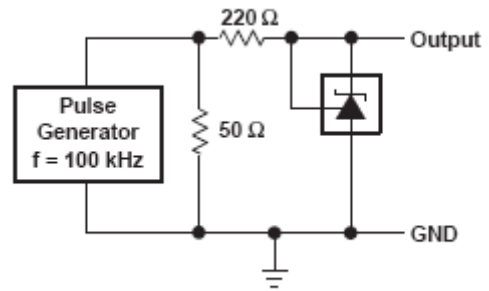
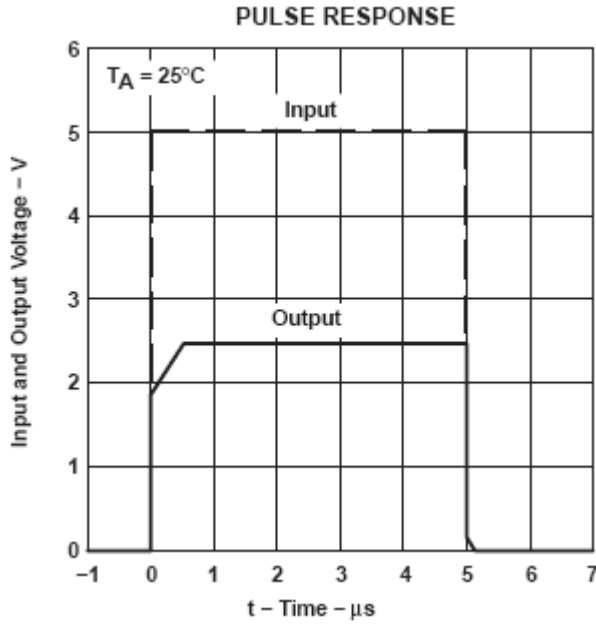




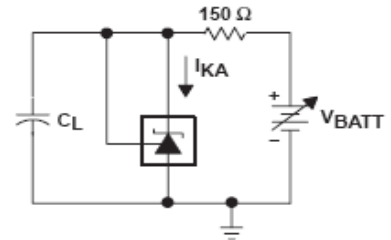
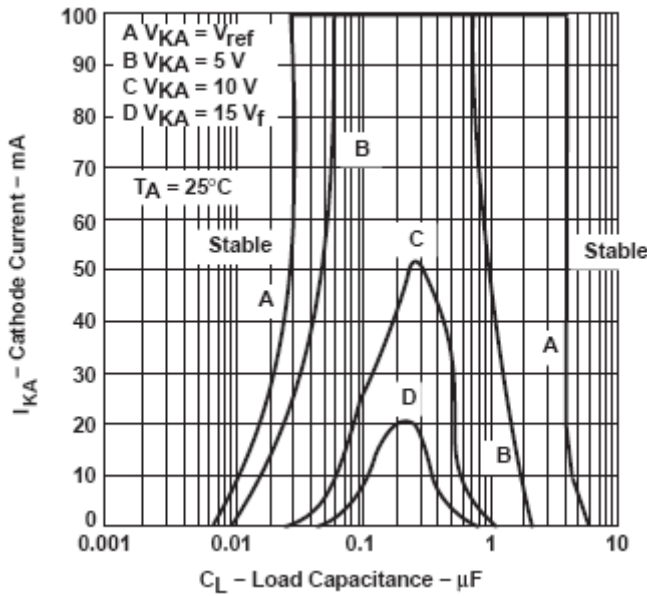
SP431

High Voltage Adjustable Precision Shunt Regulators

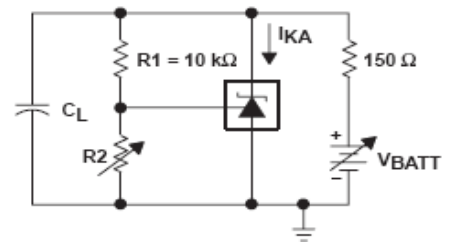
PERFORMANCE CHARACTERISTICS



TEST CIRCUIT FOR PULSE RESPONSE



TEST CIRCUIT FOR CURVE A



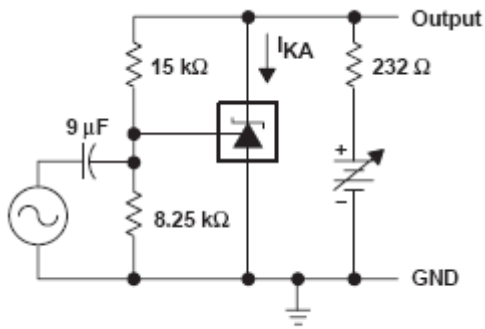
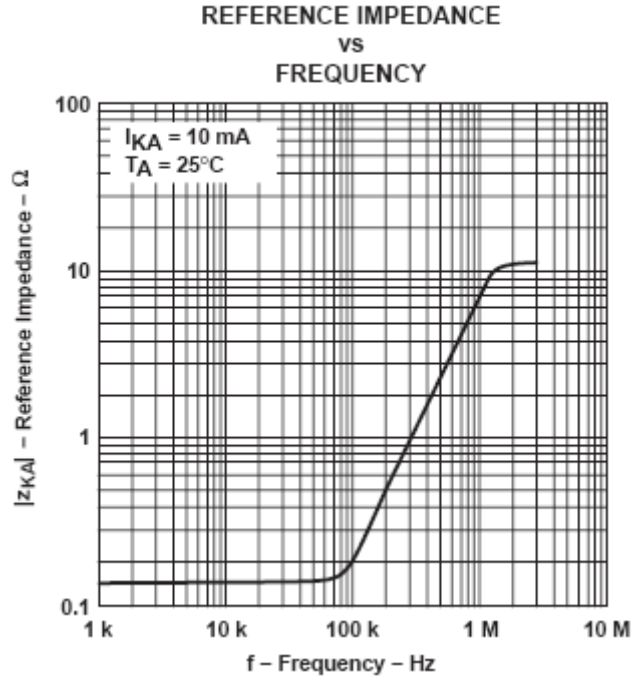
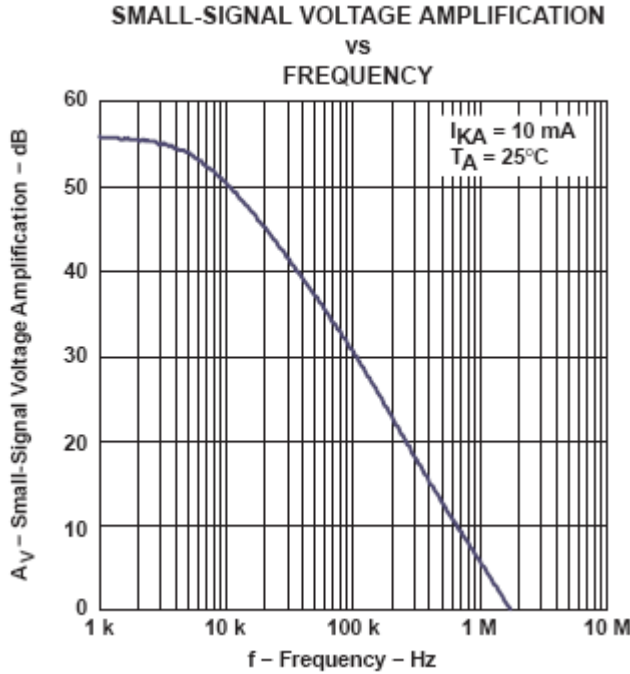
TEST CIRCUIT FOR CURVES B, C, AND D



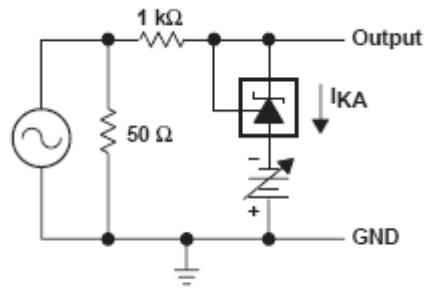
SP431

High Voltage Adjustable Precision Shunt Regulators

PERFORMANCE CHARACTERISTICS



TEST CIRCUIT FOR VOLTAGE AMPLIFICATION



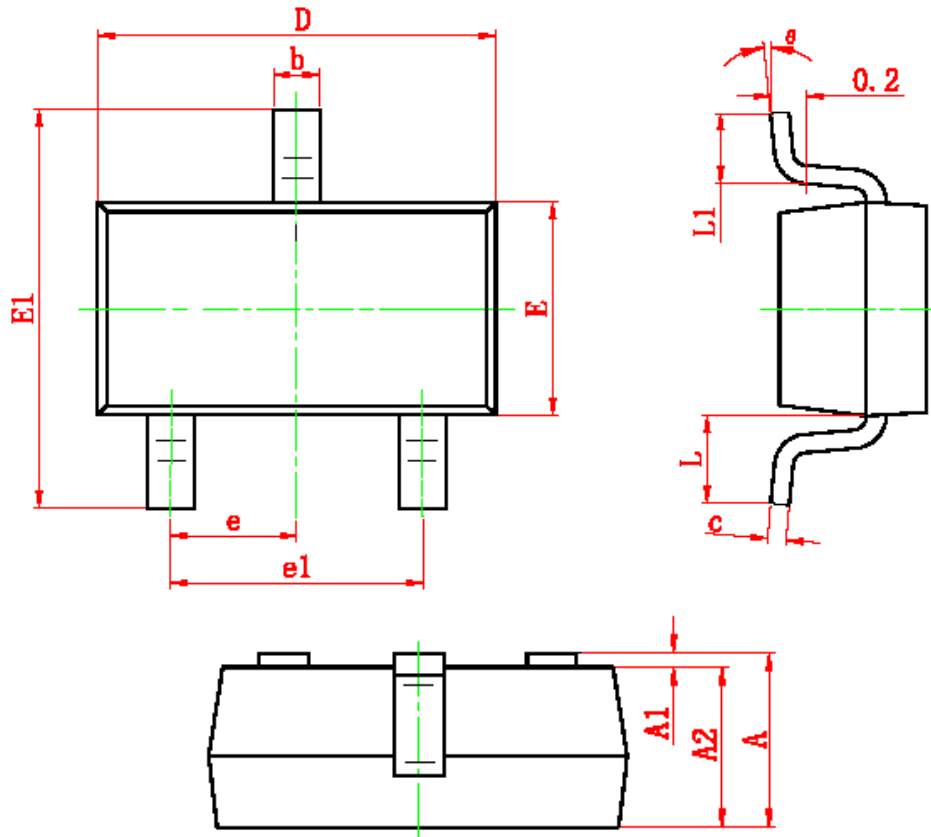
TEST CIRCUIT FOR REFERENCE IMPEDANCE



SP431

High Voltage Adjustable Precision Shunt Regulators

SOT-23 PACKAGE OUTLINE



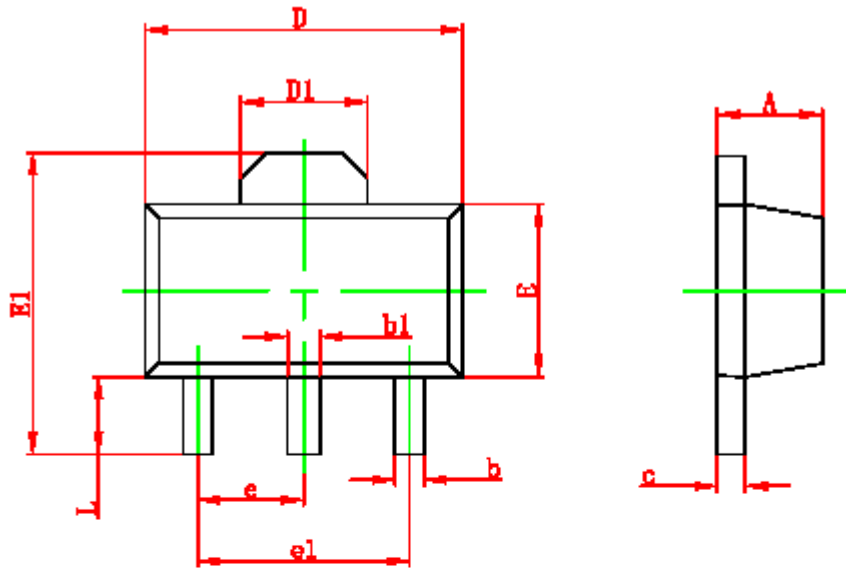
Symbol	Dimensions In Millimeters		Dimensions In Inches	
	Min	Max	Min	Max
A	0.900	1.200	0.035	0.043
A1	0.000	0.100	0.000	0.004
A2	0.900	1.100	0.035	0.039
b	0.300	0.500	0.012	0.020
c	0.080	0.150	0.003	0.006
D	2.800	3.000	0.110	0.118
E	1.200	1.400	0.047	0.055
E1	2.250	2.550	0.089	0.100
e	0.950 TYP		0.037 TYP	
e1	1.800	2.000	0.071	0.079
L	0.550 REF		0.022 REF	
L1	0.300	0.500	0.012	0.020
θ	0°	8°	0°	6°



SP431

High Voltage Adjustable Precision Shunt Regulators

SOT-89 PACKAGE OUTLINE



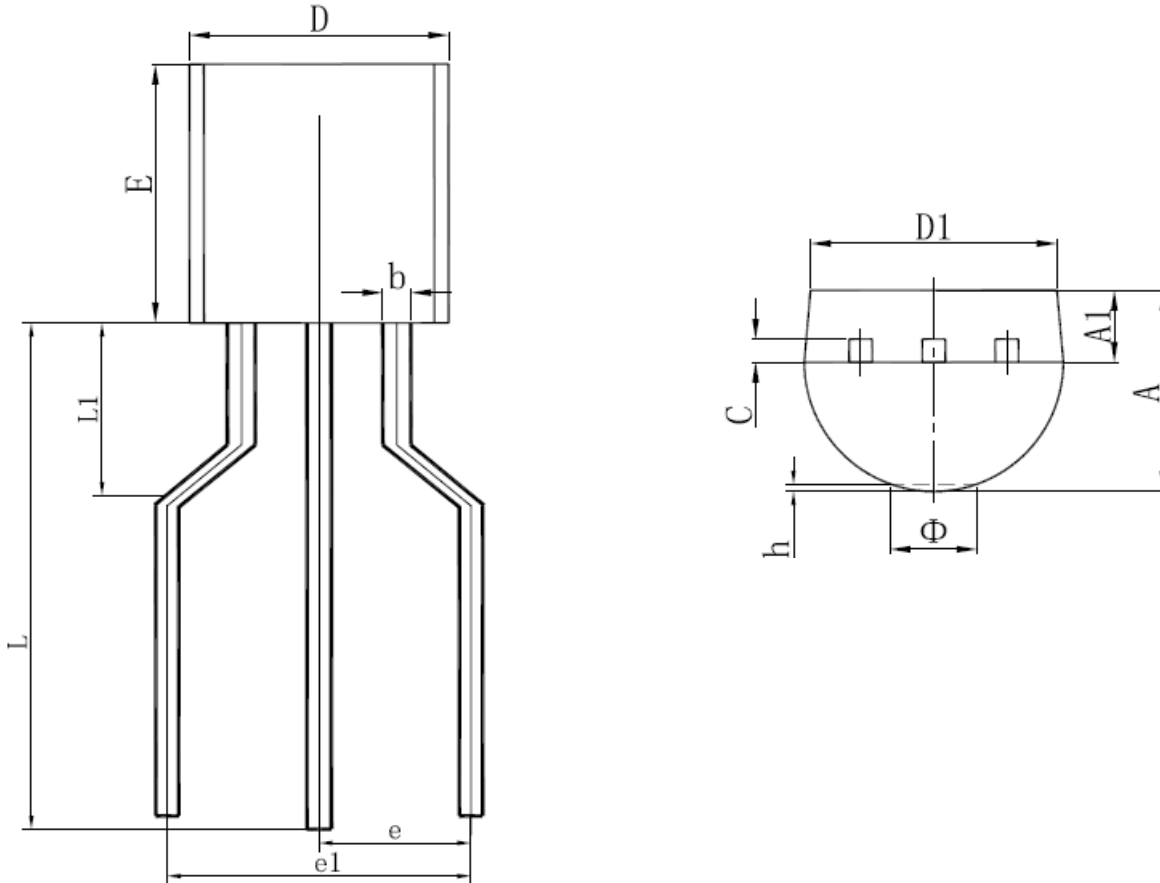
Symbol	Dimensions in Millimeters		Dimensions in Inches	
	Min	Max	Min	Max
A	1.400	1.600	0.055	0.063
b	0.320	0.520	0.013	0.020
b1	0.400	0.580	0.016	0.023
c	0.350	0.440	0.014	0.017
D	4.400	4.600	0.173	0.181
D1	1.550 REF.		0.061 REF.	
E	2.300	2.600	0.091	0.102
E1	3.940	4.250	0.155	0.167
e	1.500 TYP.		0.060 TYP.	
e1	3.000 TYP.		0.118 TYP.	
L	0.900	1.200	0.035	0.047



SP431

High Voltage Adjustable Precision Shunt Regulators

TO-92 PACKAGE OUTLINE



Symbol	Dimensions In Millimeters		Dimensions In Inches	
	Min.	Max.	Min.	Max.
A	3.300	3.700	0.130	0.146
A1	1.100	1.400	0.043	0.055
b	0.380	0.550	0.015	0.022
c	0.360	0.510	0.014	0.020
D	4.300	4.700	0.169	0.185
D1	3.430		0.135	
E	4.300	4.700	0.169	0.185
e	2.500 TYP.		0.098 TYP.	
e1	4.500	5.500	0.177	0.217
L	13.800	15.200	0.543	0.598
L1	2.700	3.300	0.106	0.130
Φ		1.600		0.063
h	0.000	0.380	0.000	0.015



SP431

High Voltage Adjustable Precision Shunt Regulators

Information provided is alleged to be exact and consistent. SYNC Power Corporation presumes no responsibility for the penalties of use of such information or for any violation of patents or other rights of third parties which may result from its use. No license is granted by allegation or otherwise under any patent or patent rights of SYNC Power Corporation. Conditions mentioned in this publication are subject to change without notice. This publication surpasses and replaces all information previously supplied. SYNC Power Corporation products are not authorized for use as critical components in life support devices or systems without express written approval of SYNC Power Corporation.

© The SYNC Power logo is a registered trademark of SYNC Power Corporation

© 2017 SYNC Power Corporation – Printed in Taiwan – All Rights Reserved

SYNC Power Corporation

7F-2, No.3-1, Park Street

NanKang District (NKSP), Taipei, Taiwan 115

Phone: 886-2-2655-8178

Fax: 886-2-2655-8468

© <http://www.syncpower.com>