



SPE0571

Single-Line ESD Protection Array

DESCRIPTION

The SPE0571 are designed by TVS device that is to protect sensitive electronics from damage or latch-up due to ESD. They are designed for use in applications where board space is at a premium. SPE0571 will protect single line, and may be used on line where the signal polarities swing above and below ground.

SPE0571 offer desirable characteristics for board level protection including fast response time, low operating and clamping voltage, and no device degradation.

SPE0571 may be used to meet the immunity requirements of IEC 61000-4-2, level 4. The small SOD-723 package makes them ideal for use in portable electronics such as cell phones, PDA's, notebook computers, and digital cameras.

APPLICATIONS

- ◆ Cellular Handsets and Accessories
- ◆ Cordless Phone
- ◆ PDA
- ◆ Notebooks and Handhelds
- ◆ Portable Instrumentation
- ◆ Digital Cameras
- ◆ MP3 Player

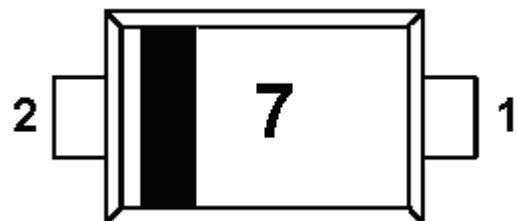
FEATURES

- ◆ Transient protection for data lines to IEC 61000-4-2 (ESD) $\pm 15\text{kV}$ (air), $\pm 8\text{kV}$ (contact)
IEC 61000-4-4 (EFT) 40A (5/50ns)
- ◆ Protects single I/O lines
- ◆ Working voltage: 5V
- ◆ Low leakage current
- ◆ Low operating and clamping voltages

PIN CONFIGURATION (SOD-723)



PART MARKING





SPE0571

Single-Line ESD Protection Array

ORDERING INFORMATION

| Part Number | Package | Part Marking |
|--------------|---------|--------------|
| SPE0571D72RG | SOD-723 | 7 |

※ SPE0571D72RG : Tape Reel ; Pb – Free

ABSOLUTE MAXIMUM RATINGS

(TA=25°C Unless otherwise noted)

| Parameter | Symbol | Typical | Unit |
|---|--------|---------------|------|
| Peak Pulse Power (tp = 8/20 μs) | Ppk | 250 | W |
| Maximum Peak Pulse Current (tp = 8/20 μs) | Ipp | 7 | A |
| ESD per IEC 61000 – 4 – 2 (Air) | Vpp | ±15 | KV |
| ESD per IEC 61000 – 4 – 2 (Contact) | Vpp | ±8 | KV |
| Operating Junction Temperature | Tj | -55 ~ 125 | °C |
| Storage Temperature Range | TSTG | -55 ~ 150 | °C |
| Lead Soldering Temperature | TL | 260 (10sec) | °C |

ELECTRICAL CHARACTERISTICS

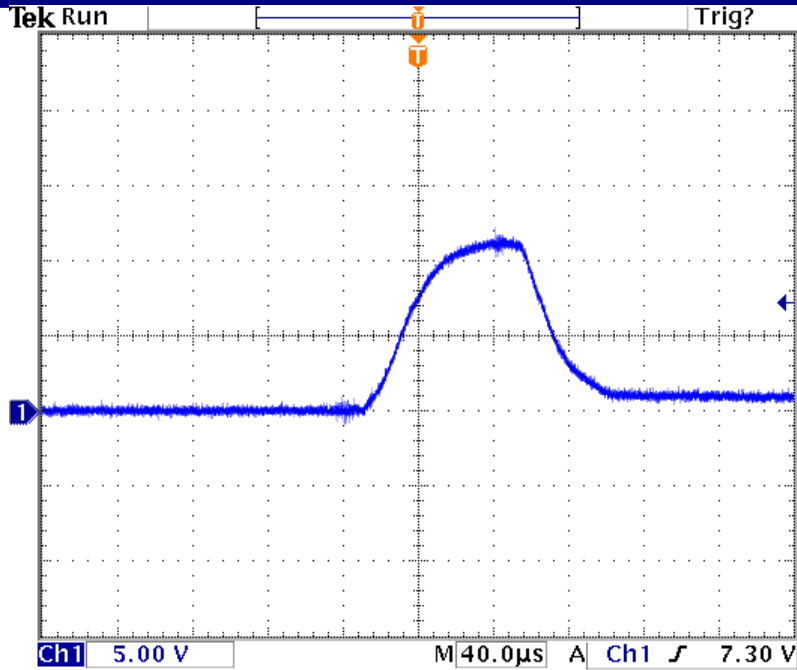
(TA=25°C Unless otherwise noted)

| Parameter | Symbol | Conditions | Min. | Typ | Max. | Unit |
|-----------------------------|--------|---|------|------|------|------|
| Reverse Stand – Off Voltage | VRWM | | | | 5 | V |
| Reverse Breakdown Voltage | VBR | It = 1mA | 6 | | | V |
| Reverse Leakage Current | IR | VRWM = 5V , T=25°C | | 0.01 | 1 | μA |
| Clamping Voltage | Vc | Ipp = 1A , tp = 8/20 μs | | | 11.5 | V |
| Clamping Voltage | Vc | Ipp = 7A , tp = 8/20 μs | | | 15 | V |
| Junction Capacitance | Cj | Between I/O Pin and GND VR = 0V , f = 1MHz | | 10 | 20 | pF |

TYPICAL CHARACTERISTICS



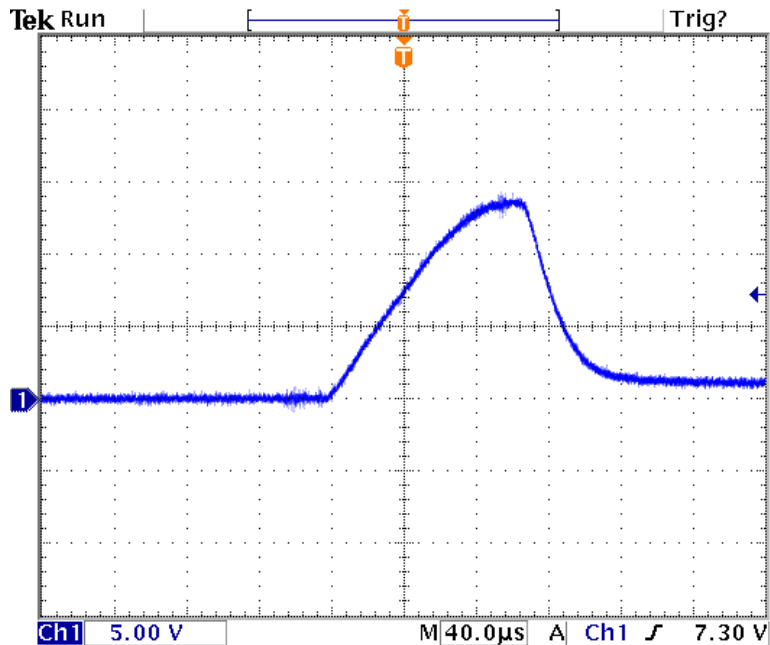
SPE0571 Single-Line ESD Protection Array



40.0000ns

Clamping Voltage ($I_{pp} = 1A$, $t_p = 8/20 \mu s$)

26 Oct 2005
12:15:46



40.0000ns

Clamping Voltage ($I_{pp} = 7A$, $t_p = 8/20 \mu s$)

26 Oct 2005
12:08:20

TYPICAL CHARACTERISTICS



SPE0571 Single-Line ESD Protection Array

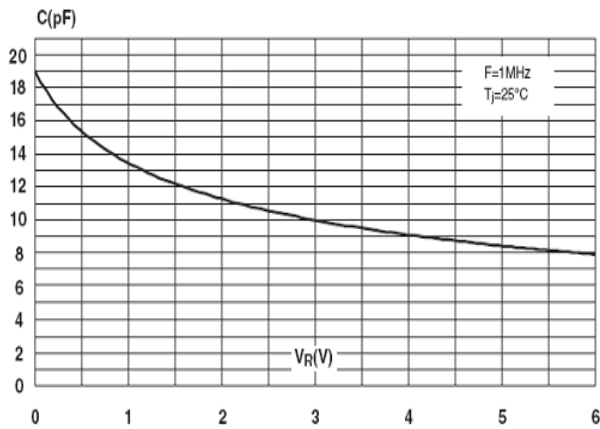


Fig 1 : Junction Capacitance V.S Reverse Voltage Applied

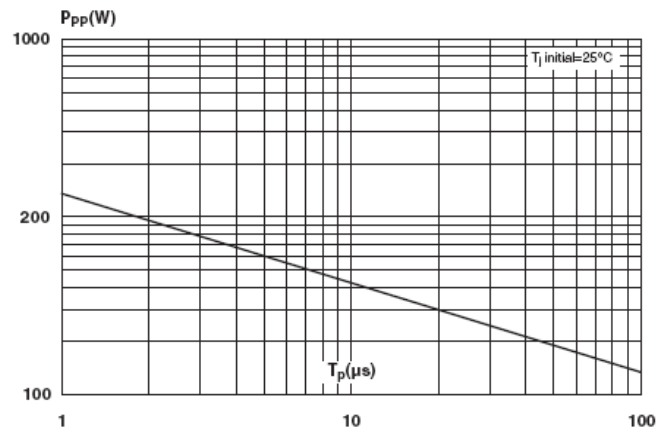


Fig 2 : Peak Plus Power V.S Exponential Plus Duration

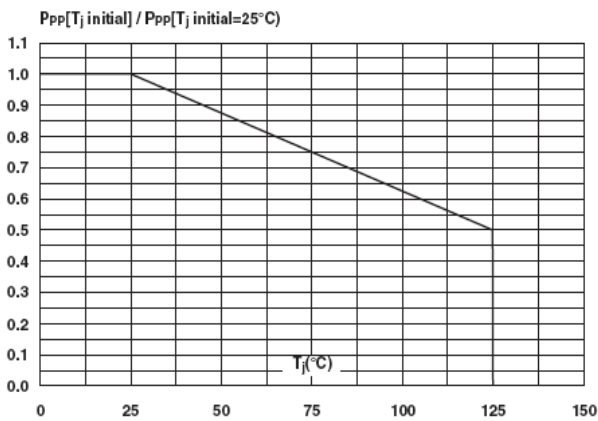


Fig 3 : Relative Variation of Peak Plus Power V.S Initial Junction Temperature

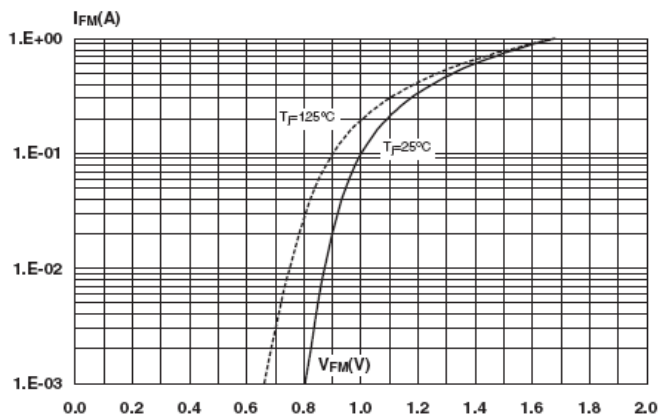


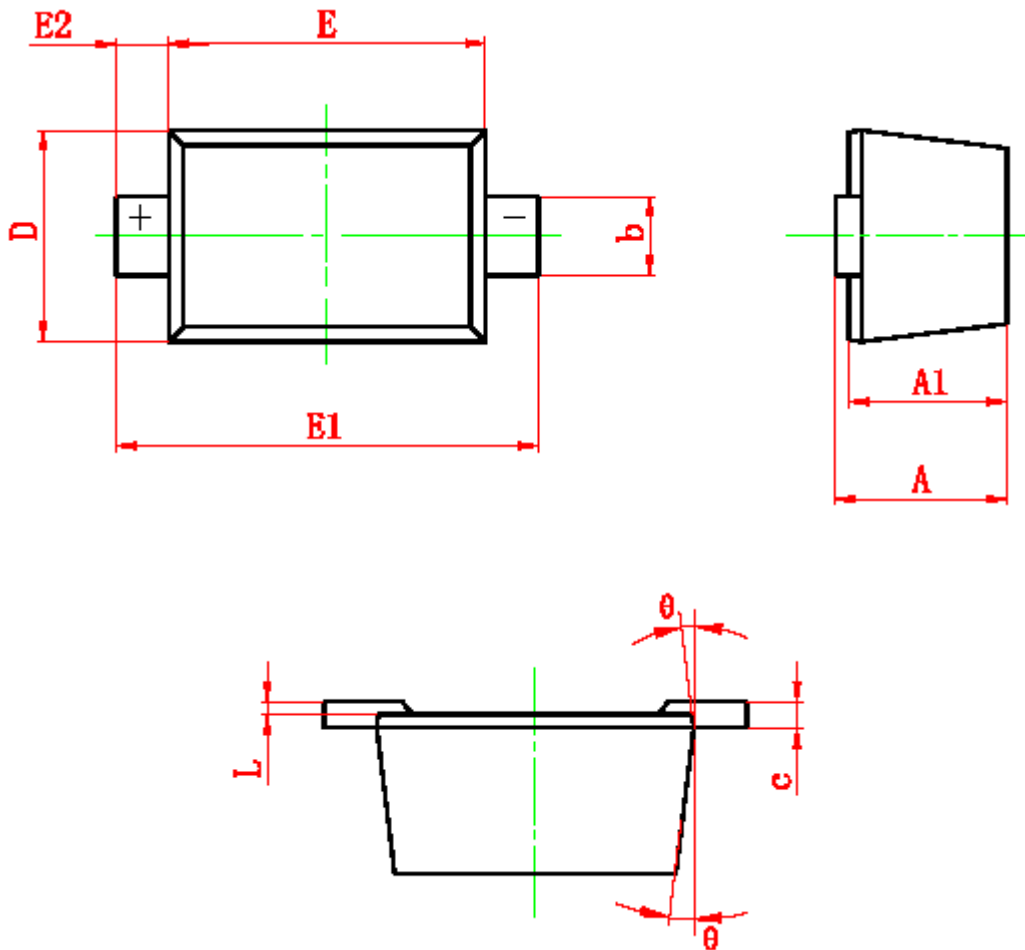
Fig 4 : Forward Voltage Drop V.S Peak Forward Current

SOD-723 PACKAGE OUTLINE



SPE0571

Single-Line ESD Protection Array



| Symbol | Dimensions In Millimeters | | Dimensions In Inches | |
|--------|---------------------------|-------|----------------------|-------|
| | Min | Max | Min | Max |
| A | 0.525 | 0.650 | 0.021 | 0.026 |
| A1 | 0.515 | 0.580 | 0.020 | 0.023 |
| b | 0.250 | 0.350 | 0.010 | 0.014 |
| c | 0.080 | 0.150 | 0.003 | 0.006 |
| D | 0.550 | 0.650 | 0.022 | 0.026 |
| E | 0.900 | 1.100 | 0.035 | 0.043 |
| E1 | 1.300 | 1.500 | 0.051 | 0.059 |
| E2 | 0.200 REF | | 0.008 REF | |
| L | 0.010 | 0.070 | 0.001 | 0.003 |
| θ | 7° REF | | 7° REF | |



SPE0571

Single-Line ESD Protection Array

Information provided is alleged to be exact and consistent. SYNC Power Corporation presumes no responsibility for the penalties of use of such information or for any violation of patents or other rights of third parties which may result from its use. No license is granted by allegation or otherwise under any patent or patent rights of SYNC Power Corporation. Conditions mentioned in this publication are subject to change without notice. This publication surpasses and replaces all information previously supplied. SYNC Power Corporation products are not authorized for use as critical components in life support devices or systems without express written approval of SYNC Power Corporation.

©The SYNC Power logo is a registered trademark of SYNC Power Corporation

©2004 SYNC Power Corporation – Printed in Taiwan – All Rights Reserved

SYNC Power Corporation

7F-2, No.3-1, Park Street

NanKang District (NKSP), Taipei, Taiwan, 115, R.O.C

Phone: 886-2-2655-8178

Fax: 886-2-2655-8468

©<http://www.syncpower.com>